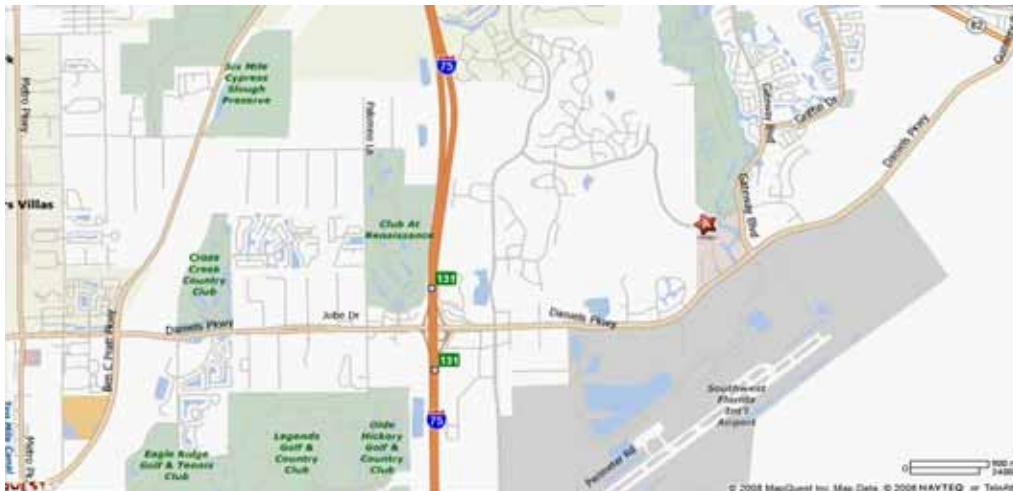


# Ideal Land Site For Development

# 17.57± Acres for Sale

Westlinks Dr & Commerce Lakes Dr, Ft. Myers, FL 33913



## Property Information:

- Located in the Gateway Park of Commerce
- Site approved for 196 unit multi-family development
- Just east of I-75 and minutes to Southwest Florida International Airport, Florida Gulf Coast University and Gulf Coast Town Center (3 million sf outdoor shopping center)
- This master planned community provides an unparalleled lifestyle for every age group and interest including nearby Tom Fazio-designed 18-hole championship golf course, community parks, new schools, walking/jogging trails, dining, shopping and entertainment.
- Gateway has experienced solid growth and continues to be among one of the top growth locations in Lee County

Sale Price: \$2,625,000

### Contact information

NAI Southwest Florida  
13120 Westlinks Terrace Blvd, Suite 2  
Ft. Myers, FL 33913  
tel 239 437 3330 fax 239 437 3220

### Bob Reynolds, CCIM

tel 239 437 3330 ext 208  
cell 239 313 0322  
rreynolds@naiswfl.com

### Joe Ferrao

tel 239 437 3330 ext 206  
cell 239 895 1425  
jferrao@naiswfl.com

**NAI** Southwest Florida, Inc.

Commercial Real Estate Services, Worldwide.

All information furnished regarding property for sale, rental or financing is from sources deemed reliable, but no warranty or representation is made as to the accuracy thereof and same is submitted subject to errors, omissions, change of price, rental or other conditions, prior sale, lease or financing or withdrawal without notice. No liability of any kind is to be imposed on the broker herein.

www.naiswfl.com