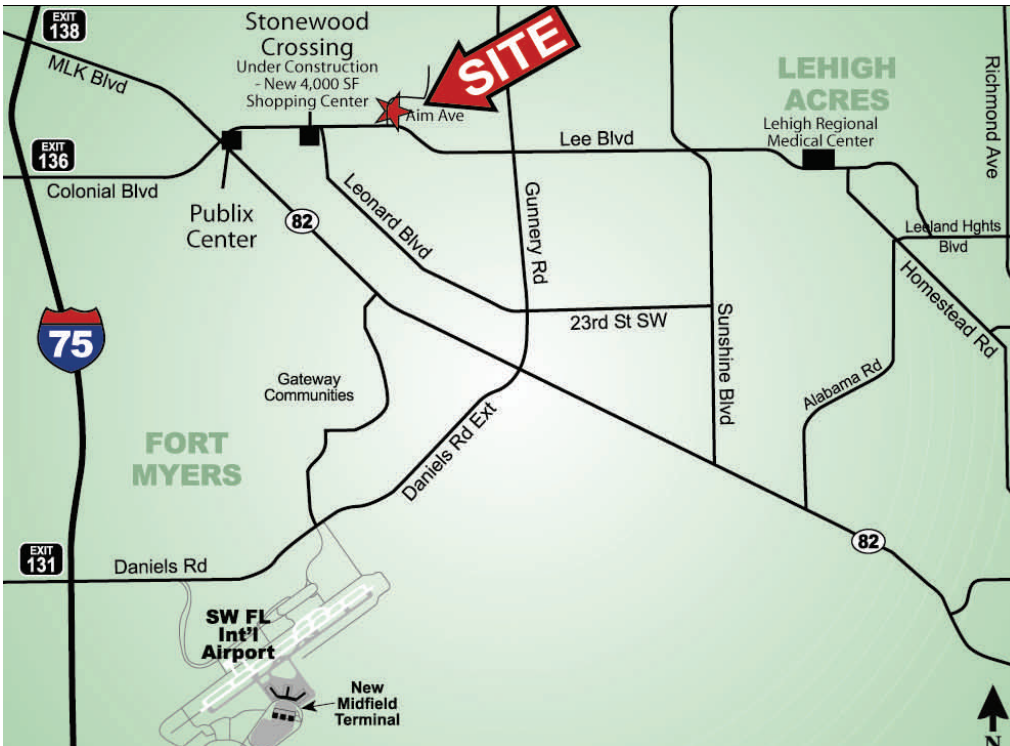


PROFESSIONAL/MEDICAL PARK DEVELOPMENT

Office Condos 1,500 SF – 31,000 +/- SF

5220 Lee Boulevard, Lehigh Acres, Florida 33971



Property information:

- Lehigh Acres only professional/medical park
- Investment opportunity
- Partially completed development
- 2 of 3 shell building included - plans for 6 additional buildings
- High Traffic Area: Lee Blvd is the major east/west corridor
- Expanding business corridor
- Quality construction
- Minutes off Interstate 75
- Midway between 2 major medical centers

Development is partially completed – to be delivered “as is”

Price: \$2,700,000



Contact information

NAI Southwest Florida
13120 Westlinks Terrace #2
Fort Myers, FL 33913
tel 239-437-3330 fax 239-437-3220

Joe Ferrao
direct 239-895-1425
jferrao@naiswfl.com

Bob Reynolds, CCIM
direct 239-313-0322
rreynolds@naiswfl.com

naiswfl.com

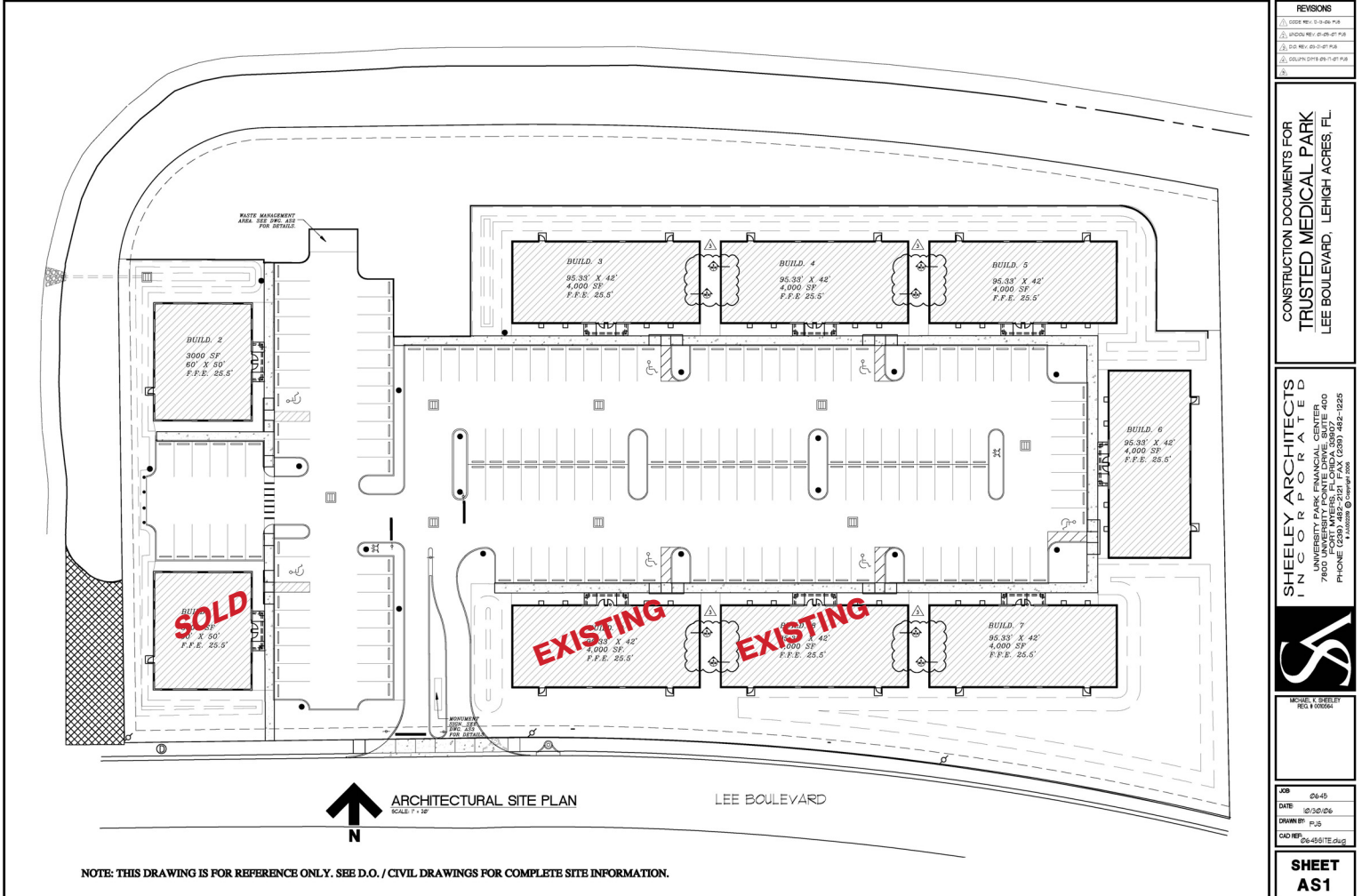
NAI Southwest Florida, Inc.

Committed to Florida. Connected to the world.

The information contained herein has been given to us by the owner of the property or other sources we deem reliable, we have no reason to doubt its accuracy, but we do not guarantee it. All information should be verified prior to purchase or lease.

TRUSTED PROFESSIONAL/MEDICAL PARK Site Plan

5220 Lee Boulevard, Lehigh Acres, Florida 33971



NAI Southwest Florida, Inc.

Committed to Florida. Connected to the world.

The information contained herein has been given to us by the owner of the property or other sources we deem reliable, we have no reason to doubt its accuracy, but we do not guarantee it. All information should be verified prior to purchase or lease.