



Office Space Available for Lease

Riverview Corporate Center

27399 Riverview Center Blvd., Bonita Springs, FL

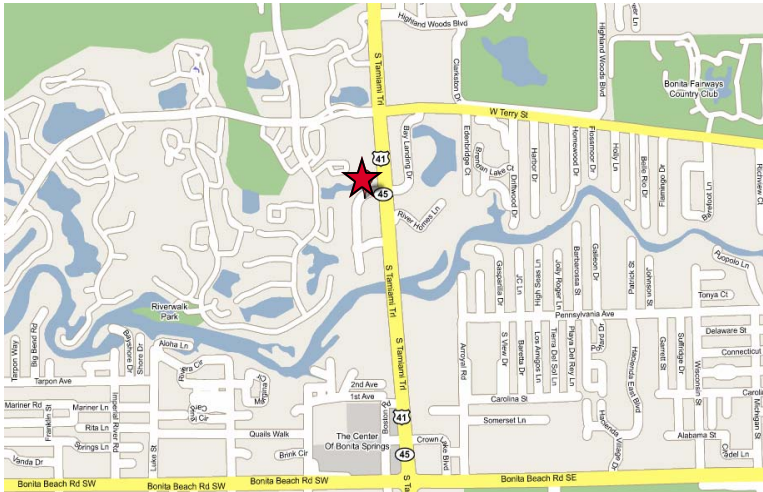
Riverview IV Information

- Nine building campus on 24 acres Lakeside site and park-like landscape
- Ample parking with curbs, sidewalks and lighting
- Wired for fast, precise data transmission and telecommunications
- Sound proofing between units
- Fully sprinklered with monitored alarm system
- Underground utilities

Available Space

850 sq. ft. up to 7,600 sq. ft. available for lease

- Large tinted windows on all perimeter walls
- Riverview Corporate Center is built, owned and managed by McGarvey Development



NAI Southwest Florida, Inc.
Commercial Real Estate Services, Worldwide.

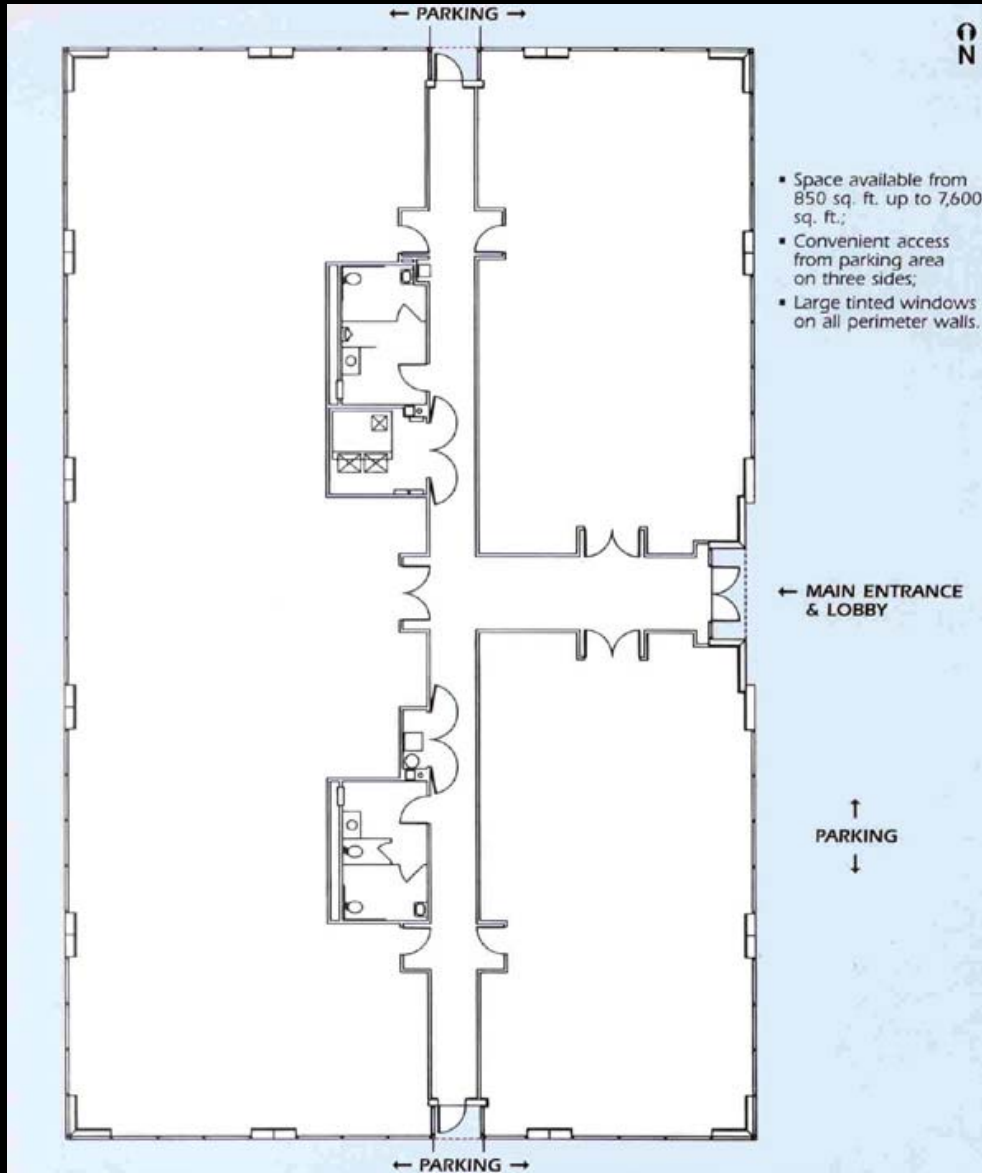
All information furnished regarding property for sale, rental or financing is from sources deemed reliable, but no warranty or representation is made as to the accuracy thereof and same is submitted subject to errors, omissions, change of price, rental or other conditions, prior sale, lease or financing or withdrawal without notice. No liability of any kind is to be imposed on the broker herein.

Contact information
NAI Southwest Florida
13120 Westlinks Terrace Blvd., Suite 2
Ft. Myers, FL 33913

Kevin M. Fitzgerald, CSE
President
tel 239 437 3330
fax 239-437-3220
kfitzgerald@naiswfl.com
www.naiswfl.com

Office Space Available for Lease Riverview Corporate Center

27399 Riverview Center Blvd., Bonita Springs, FL



NAI Southwest Florida, Inc.

Commercial Real Estate Services, Worldwide.

All information furnished regarding property for sale, rental or financing is from sources deemed reliable, but no warranty or representation is made as to the accuracy thereof and same is submitted subject to errors, omissions, change of price, rental or other conditions, prior sale, lease or financing or withdrawal without notice. No liability of any kind is to be imposed on the broker herein.

Contact information

NAI Southwest Florida
13120 Westlinks Terrace Blvd., Suite 2
Ft. Myers, FL 33913

**Kevin M. Fitzgerald, CSE
President**

tel 239 437 3330
fax 239-437-3220
kfitzgerald@naiswfl.com
www.naiswfl.com